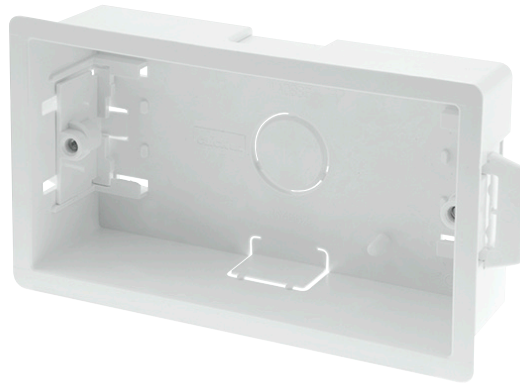


**Product Code:** WA088P

**Description:** 2 Gang 35mm Deep Dry Lining Box



### General Information

|  |   |  |         |
|--|---|--|---------|
| <b>Dimensions (mm)</b>                     | 143 (W) x 83 (H) x 35 (D)   |  |         |
| <b>Cutout Dimensions (mm)</b>              | 135 (W) x 75 (H)  |  |         |
| <b>Materials</b>                           | Body: PVC   | Lugs: PVC                              |         |
|  | Threaded Lug: Brass   |  |         |
| <b>Maximum Plasterboard Thickness (mm)</b> | 18  |  |         |
| <b>Back Box Knockouts - Total (mm)</b>     | 2 x 20 x 20, 1 x Ø25  |  |         |
| <b>Back Box Knockouts - Top (mm)</b>       | 1 x 20 x 20   | <b>Back Box Knockouts - Sides (mm)</b> | None    |
| <b>Back Box Knockouts - Bottom (mm)</b>    | 1 x 20 x 20   | <b>Back Box Knockouts - Rear (mm)</b>  | 1 x Ø25 |
| <b>Back Box Earth Terminal Supplied</b>    | No  |  |         |
| <b>Operational Temperature (°C)</b>        | -5 to +40   |  |         |
| <b>Warranty (Years)</b>                    | 10  |  |         |
| <b>Standards</b>                           | BS 5733: 2010 +A1: 2014<br>BS 4662: 2006 +A1: 2009 (where applicable) |  |         |