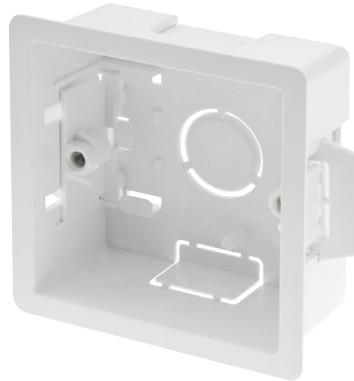


Product Code: WA087P

Description: 1 Gang 35mm Deep Dry Lining Box



General Information

Dimensions (mm)	83 (W) x 83 (H) x 35 (D)		
Cutout Dimensions (mm)	75 (W) x 75 (H)		
Materials	Body: PVC	Lugs: PVC	
	Threaded Lug: Brass		
Maximum Plasterboard Thickness (mm)	18		
Back Box Knockouts - Total (mm)	2 x 20 x 20, 1 x Ø25		
Back Box Knockouts - Top (mm)	1 x 20 x 20	Back Box Knockouts - Sides (mm)	None
Back Box Knockouts - Bottom (mm)	1 x 20 x 20	Back Box Knockouts - Rear (mm)	1 x Ø25
Back Box Earth Terminal Supplied	No		
Operational Temperature (°C)	-5 to +40		
Warranty (Years)	10		
Standards	BS 5733: 2010 +A1: 2014 BS 4662: 2006 +A1: 2009 (where applicable)		